

# Linear actuator

CAHM-50

## Benefits

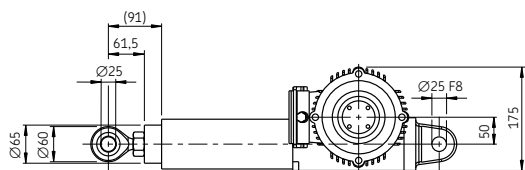
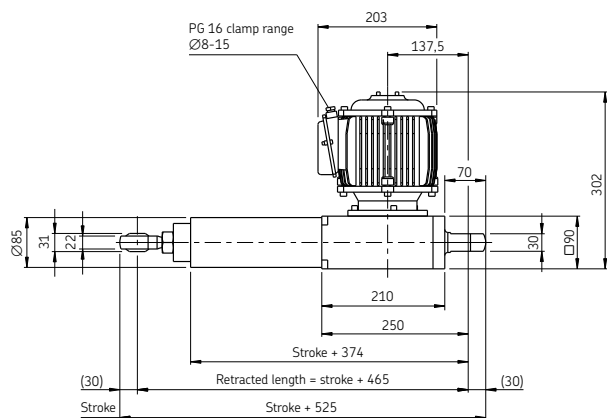
- Modular
- Robust
- Reliable
- High speed and/or high load
- All metal design



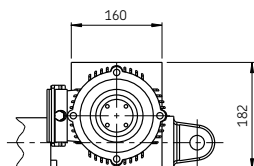
Picture CAHM-5012-BN0300-R00



Dimensional drawing



Option 2:  
 0 - No option



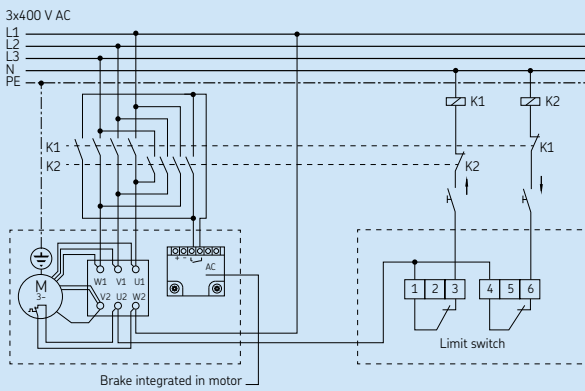
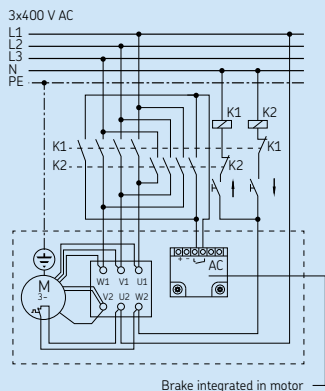
Option 2:  
 L - Limit switch  
 C - Limit switch and potentiometer 1 000 Ω

Technical data

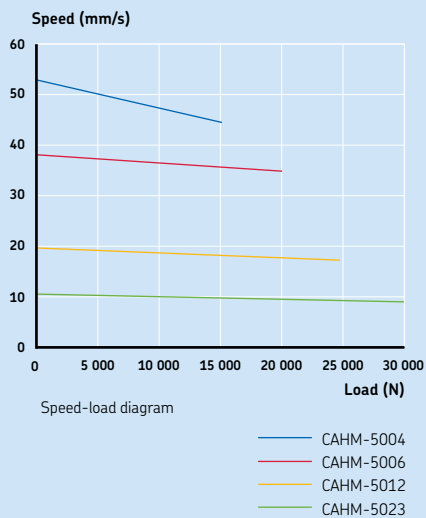
	Unit	CAHM-5004	CAHM-5006	CAHM-5012	CAHM-5023
Rated push load	N	15 000	20 000	25 000	30 000
Rated pull load	N	15 000	20 000	25 000	30 000
Speed (at full load)	mm/s	45	35	17	9
Stroke	mm	100 to 700	100 to 700	100 to 700	100 to 700
Retracted length	mm	S+465	S+465	S+465	S+465
Voltage	VAC	3x400	3x400	3x400	3x400
Power consumption	W	1 700	1 650	1 300	1 200
Current consumption	A	3,3	3,5	2,8	3,0
Duty cycle	%	10 (1/9)	10 (1/9)	10 (1/9)	10 (1/9)
Ambient temperature	°C	-10 to +40	-10 to +40	-10 to +40	-10 to +40
Type of protection	IP	54	54	54	54
Weight	kg	30	30	30	30
Color	-	Silver	Silver	Silver	Silver

Connecting diagrams

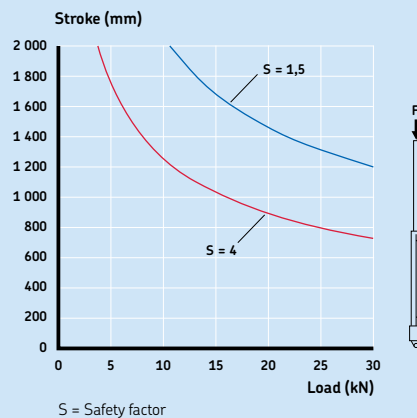
Motor:  
 A4 - 3x400 V AC



Performance diagram



Safety factor load conditions



Ordering key

Load [N] / Full Load Speed [mm/s]			
15 000 / 45	20 000 / 35	25 000 / 17	30 000 / 9
4	6	12	23

C A H M - 5 0 - B N 0 - A 4 - R 0 - 0 0 0

Type

Size (Gear Center Distance)

50 mm 5 0

Gear Ratio

4	0 4
6	0 6
12	1 2
23	2 3

Screw Type

Ball screw 40x10 B N

Stroke

100 mm	0 1 0 0
200 mm	0 2 0 0
300 mm	0 3 0 0
400 mm	0 4 0 0
500 mm	0 5 0 0
600 mm	0 6 0 0
700 mm	0 7 0 0

Motor

3x400 VAC A 4

Front Attachment

Rod End R

Option 1 - Brake

No option - Brake is in the motor as standard 0

Option 2

No option 0  
 Limit switch L  
 Limit switch and potentiometer (1 000 Ω) C

Customer option

0 0 0

