

CASM-32

Siemens motors and adapters

In order to provide you a fully integrated system, SKF combined its actuator expertise with Siemens' well-known motor knowledge. Thanks to this partnership, SKF offers a complete linear solution, including a CASM linear unit mounted with a SIEMENS 1FK7 servomotor.

The Siemens motors 1FK7015 and 1FK7022 come with a multipole resolver, a shaft-end with no keyway and a holding brake. In addition, the 1FK7022 model is equipped with a DRIVE-CLiQ interface. A rotating plug adapter simplifies the connection and cable routing in all installation positions.

For more information, please visit the following sites:

Motors: www.siemens.com/motors

Frequency converters: www.siemens.com/sinamics

Automation systems: www.siemens.com/simotion

Controls: www.siemens.com/simatic

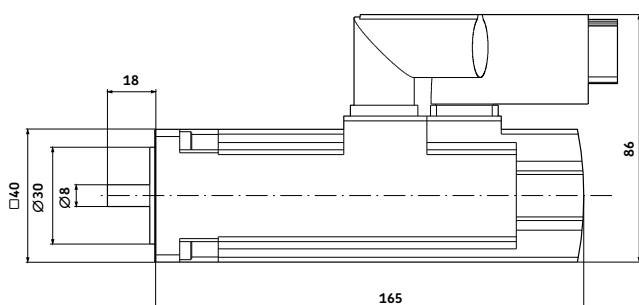
Engineering software: www.siemens.com/sizer

Support worldwide: www.siemens.de/service

Solutions with Siemens motor 1FK7015 and compatible adapters

Order N°
 1FK7015-5AK71-1SH3

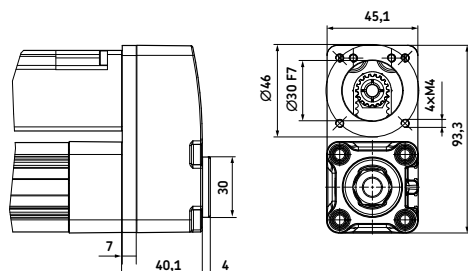
Dimensional drawing Siemens motor 1FK7015



Motor data

	Unit	1FK7015
Rated power (100 K)	kW	0,1
Rated speed	min ⁻¹	6 000
Rated current	A	0,85
Rated torque (100 K)	Nm	0,16
Static torque (100 K)	Nm	0,35
Peak torque	Nm	1
Inertia with brake	10 ⁻⁴ kgm ²	0,102
Shaft height	mm	20
Weight with brake	kg	1,2

Parallel adapter kit for CASM-32 and Siemens 1FK7015 motor*



* Screws included



Order N°
 ZBE-375540

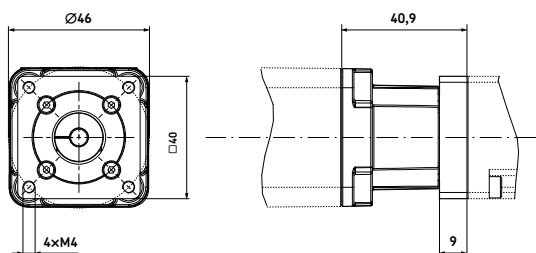
System capabilities

	Unit	Peak force	Fm ¹⁾
CASM-32-LS	N	300	203
CASM-32-BS	N	700	293
CASM-32-BN	N	450	151

¹⁾ RMS force over full cycle. For more information, please visit www.skf.com/casm



In-line adapter kit for CASM-32 and Siemens 1FK7015 motor*



* Screws included



Order N°
 ZBE-375530

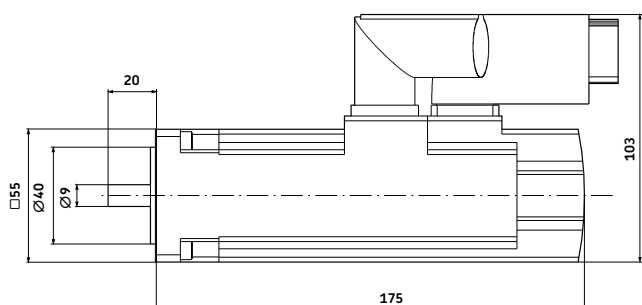
System capabilities

	Unit	Peak force	Fm ¹⁾
CASM-32-LS	N	300	203
CASM-32-BS	N	700	293
CASM-32-BN	N	450	151

¹⁾ RMS force over full cycle. For more information, please visit www.skf.com/casm

Solution with Siemens motor 1FK7022 and compatible adapter

Dimensional drawing Siemens motor 1FK7022

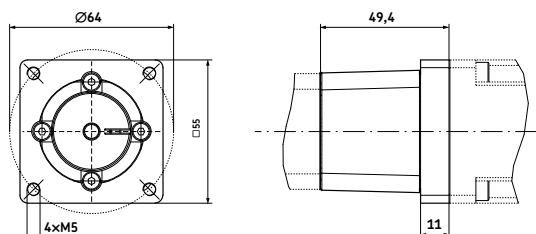


Order N°
 1FK7022-5AK71-1UH3

Motor data

	Unit	1FK7022
Rated power (100 K)	kW	0,43
Rated speed	min ⁻¹	6 000
Rated current	A	1,4
Rated torque (100 K)	Nm	0,6
Static torque (100 K)	Nm	0,85
Peak torque	Nm	3,4
Inertia with brake	10 ⁻⁴ kgm ²	0,35
Shaft height	mm	28
Weight with brake	kg	2

In-line adapter kit for CASM-32 and Siemens 1FK7022 motor*



* Screws included



Order N°
 ZBE-375531

System capabilities

	Unit	Peak force	Fm ¹⁾
CASM-32-LS	N	300	300
CASM-32-BS	N	700	672
CASM-32-BN	N	630	357

¹⁾ RMS force over full cycle. For more information, please visit www.skf.com/casm

© SKF is a registered trademark of the SKF Group

© SKF Group 2011

The contents of this publication are the copyright of the publisher and may not be reproduced (even extracts) unless prior written permission is granted. Every care has been taken to ensure the accuracy of the information contained in this publication but no liability can be accepted for any loss or damage whether direct, indirect or consequential arising out of the use of the information contained herein.

PUB MT/P8 12189 EN · October 2011