

The contents of this publication are the copyright of the publisher and may not be reproduced (even extracts) unless prior written permission is granted. Every care has been taken to ensure the accuracy of the information contained in this publication but no liability can be accepted for any loss or damage whether direct, indirect or consequential arising out of the use of the information contained herein.

Le contenu de cette publication est soumis au copyright de l'éditeur et sa reproduction, même partielle, est interdite sans autorisation écrite préalable. Le plus grand soin a été apporté à l'exactitude des informations données dans cette publication mais SKF décline toute responsabilité pour les pertes ou dommages directs ou indirects découlant de l'utilisation du contenu du présent document.

Nachdruck, auch auszugsweise, nur mit unserer vorherigen schriftlichen Genehmigung gestattet. Die Angaben in dieser Druckschrift wurden mit größter Sorgfalt auf ihre Richtigkeit hin überprüft. Trotzdem kann keine Haftung für Verluste oder Schäden irgendwelcher Art übernommen werden, die sich mittelbar oder unmittelbar aus der Verwendung der hier enthaltenen Informationen ergeben.

El contenido de esta publicación es propiedad de los editores y no puede reproducirse (incluso parcialmente) sin autorización previa por escrito. Se ha tenido el máximo cuidado para garantizar la exactitud de la información contenida en esta publicación, pero no se acepta ninguna responsabilidad por pérdidas o daños, ya sean directos, indirectos o consecuentes, que se produzcan como resultado del uso de dicha información.

La riproduzione, anche parziale, del contenuto di questa pubblicazione è consentita soltanto previa autorizzazione scritta della SKF. Nella stesura è stata dedicata la massima attenzione al fine di assicurare l'accuratezza dei dati, tuttavia non si possono accettare responsabilità per eventuali errori od omissioni, nonché per danni o perdite diretti o indiretti derivanti dall'uso delle informazioni qui contenute.

O conteúdo desta publicação é de direito autoral do editor e não pode ser reproduzido (nem mesmo parcialmente), a não ser com permissão prévia por escrito. Todo cuidado foi tomado para assegurar a precisão das informações contidas nesta publicação, mas nenhuma responsabilidade pode ser aceita por qualquer perda ou dano, seja direto, indireto ou consequente, como resultado do uso das informações aqui contidas.

本出版物内容的著作权归出版者所有且未经事先书面许可不得被复制（甚至引用）。我们已采取了一切注意措施以确定本出版物包含的信息准确无误，但我们不对因使用此等信息而产生的任何损失或损害承担任何责任，不论此等责任是直接、间接或附随性的。

Содержание этой публикации является собственностью издателя и не может быть воспроизведено (даже частично) без предварительного письменного разрешения. Несмотря на то, что были приняты все меры по обеспечению точности информации, содержащейся в настоящем издании, издатель не несет ответственности за любой ущерб, прямой или косвенный, вытекающий из использования вышеуказанной информации.

SKF Maintenance Products

© SKF is a registered trademark of the SKF Group.
© SKF Group 2015/03

www.mapro.skf.com
www.skf.com/mount

MP5444




SKF TMMK 20-50

Instructions for use
Mode d'emploi
Bedienungsanleitung
Instrucciones de uso

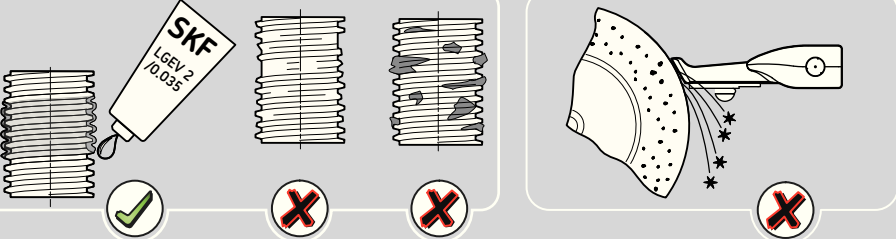
Manuale d'istruzioni
Instruções de uso
使用说明书
Инструкция по эксплуатации

Техническая поддержка:
mail@indpart.ru, 8(495)223-07-69

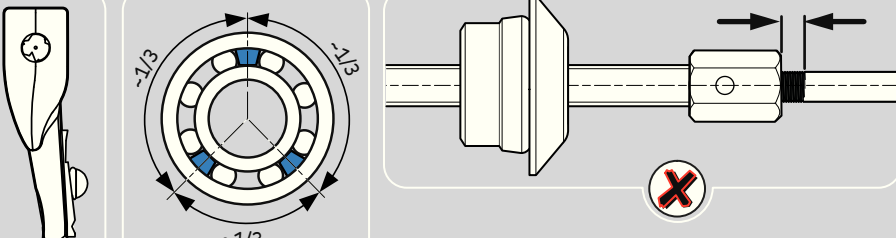
! TMBA G11W **MP5444**




SKF
LGEV 2
0,035



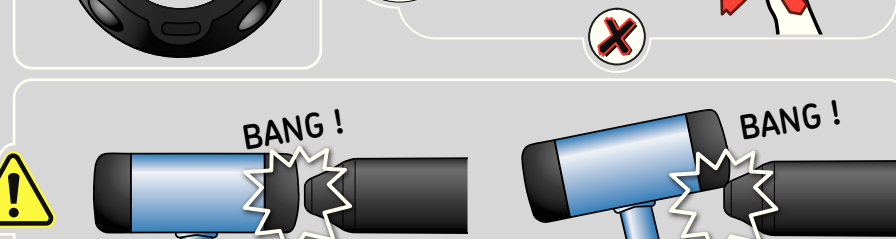
BANG !



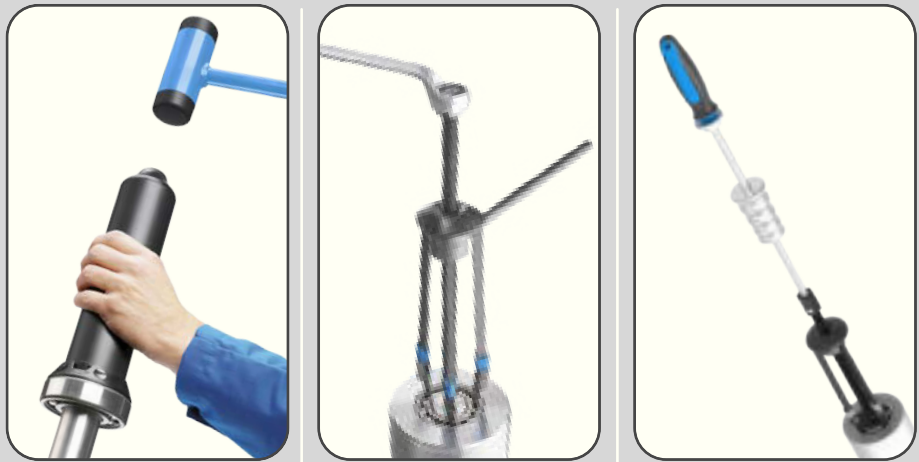

BANG !



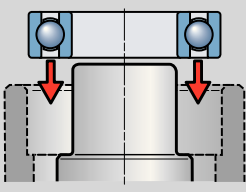
BANG !



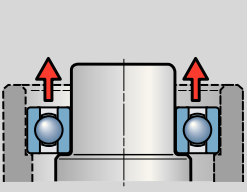
BANG !



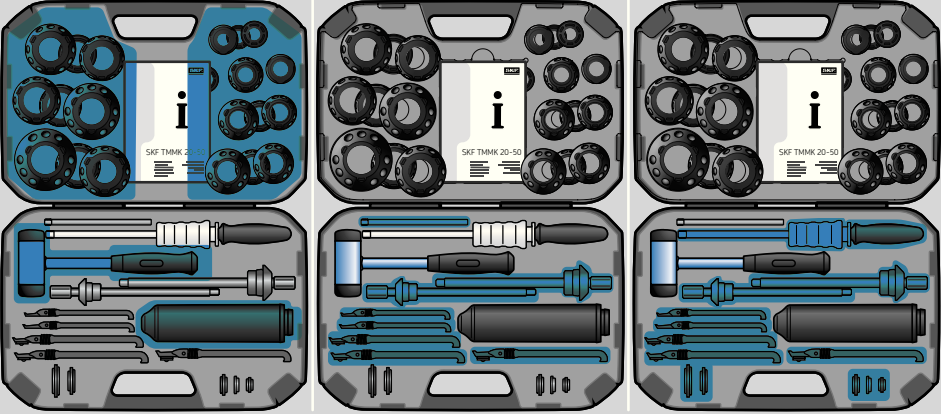
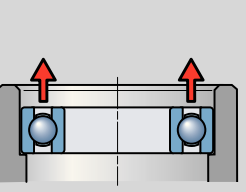
4

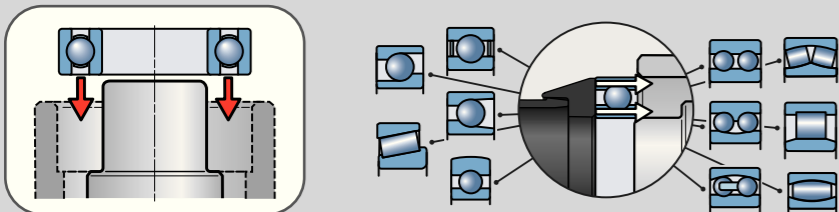


7,8



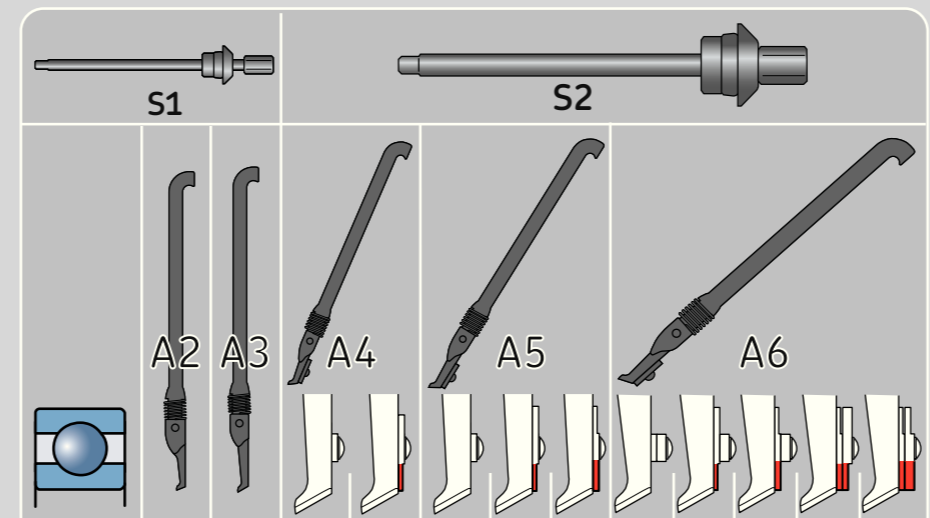
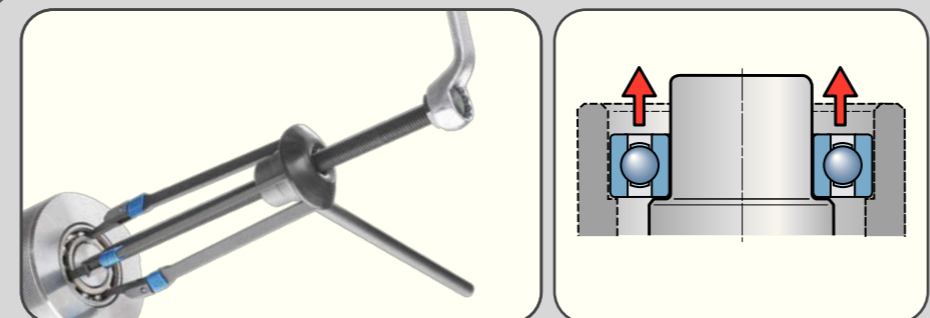
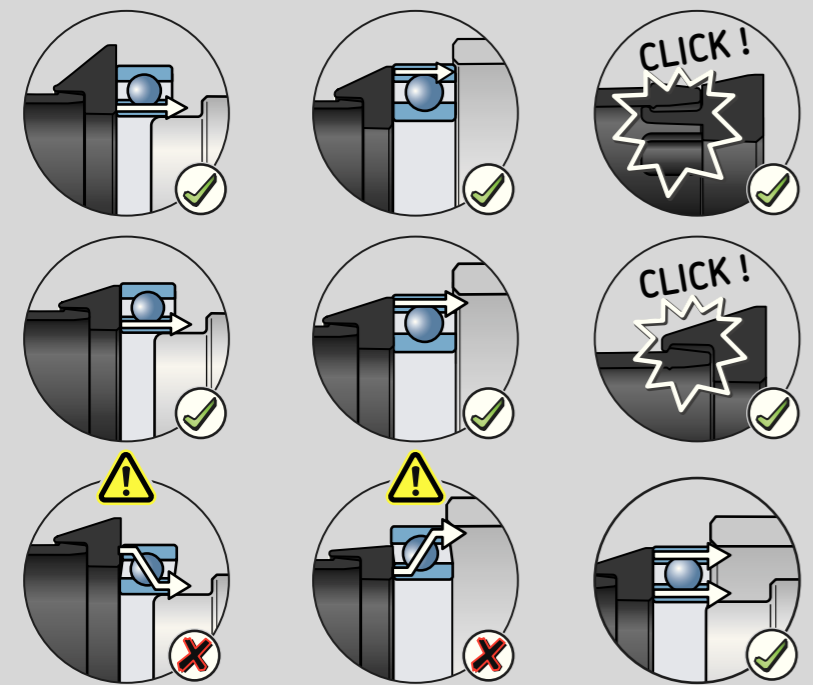
5,6



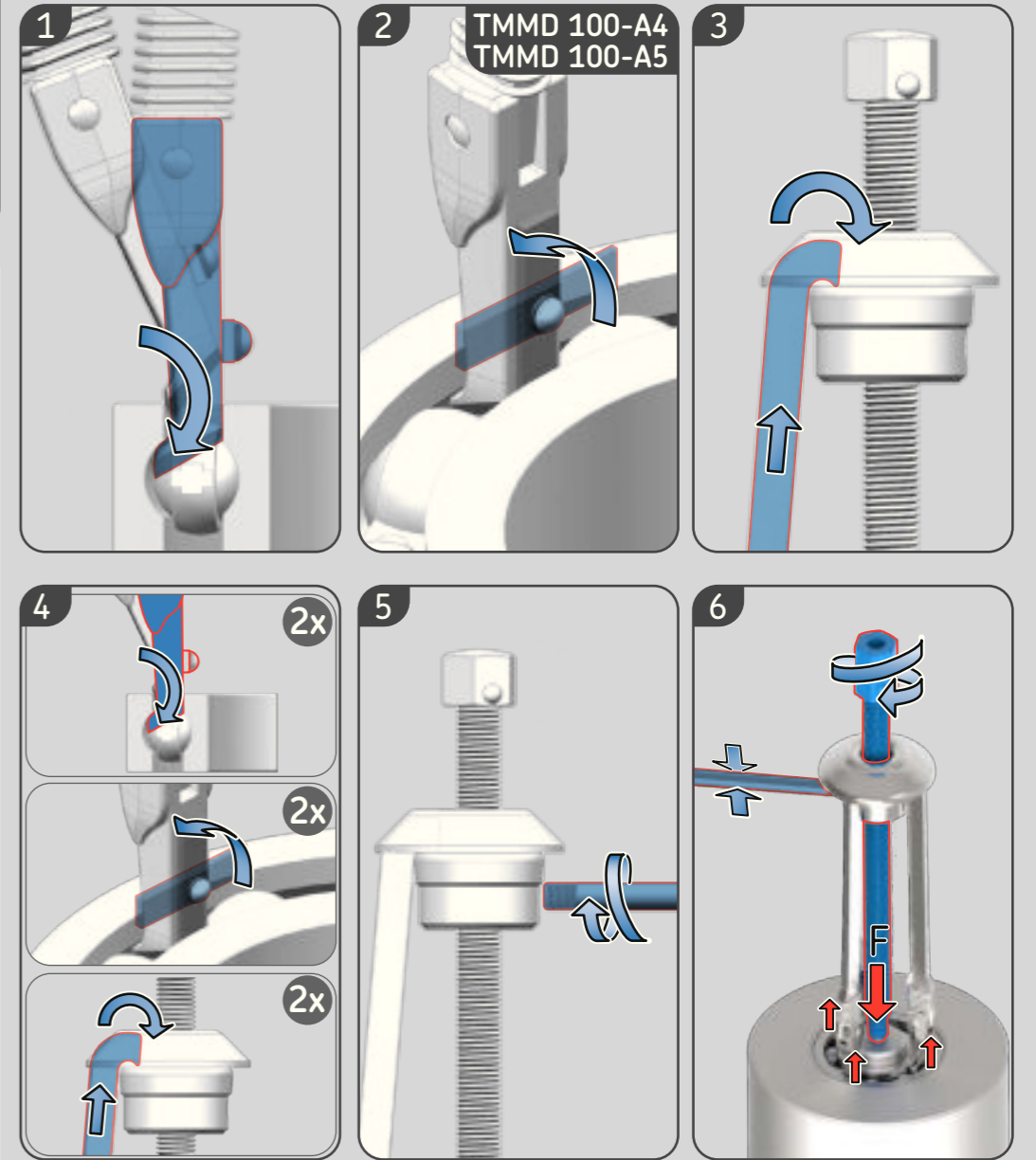


B	20-42	20-47	20-52	25-47	25-52	25-62	30-55	30-62	30-72	35-62	35-72	35-80
60..	6004			6005			6006			6007		
62..		6204		62/22	6205		62/28	6206			6207	
63..			6304	63/22	6305		63/28	6306				6307
64..					6403			6404				6405
160..	16004			16005			16006			16007		

C	40-68	40-80	40-90	45-75	45-85	45-100	50-80	50-90	50-110
60..	6008			6009			6010		
62..		6208			6209			6210	
63..			6308			6309			6310
64..			6406			6407			6408
160..	16008			16009			16010		



60..	6004	6007	6011	6014	6016	6018			
	6005	6008	6012	6015	6017	6019			
	6006	6009	6013			6020			
		6010							
62..	6201	6204	6206	6207	6209	6210	6212	6214	6218
	6202	6205	62/28	6208		6211	6213	6215	
	6203	62/22					6216	6217	
63..		6300	6303	63/22	6305	6306	6307	6308	6309
		6301	6304		63/28				6310
		6302							6311
									6312
64..									
					6403	6404	6406	6407	6408
						6405			6410
									6409
160..	16011								



1 **2** **3** TMMD 100-A4
TMMD 100-A5 **7** BANG!

4 **5** 2x **6**

Series	Series	Series	Series	Series
20	6004	6204	6304	6404
22	62/22	63/22		
25	6005	6205	6305	6405
28		62/28	63/28	
30	6006	6206	6306	6406
35	6007	6207	6307	6407
40	6008	6208	6308	6408
45	6009	6209	6309	6409
50	6010	6210	6310	6410

TMFT 36 ..	TMFT 36 ..	TMFT 36 ..	TMFT 36 ..
B20-42	B30-55	C40-68	C50-80
B20-47	B30-62	C40-80	C50-90
B20-52	B30-72	C40-90	C50-110
B25-47	B35-62	C45-75	
B25-52	B35-72	C45-85	
B25-62	B35-80	C45-100	

B XX-YY C XX-YY

TMFT 36 C45-100 = TMFT 36 C45-10
 TMFT 36 C50-110 = TMFT 36 C50-11

	D		d		L out		L in	
	mm	in	mm	in	mm	in	mm	in
TMFT 36 B	45	1.7	37	1.4	235	9.3	210	8.3
TMFT 36 C	66	2.6	57	2.2	245	9.6	215	8.4

315 mm
 0,9 kg (2.0 lb)
 110 mm (4.3 in)
 TMFT 36-H

8,5 kg (18.6 lb)
 TMMK 20-50
 360 mm (14.2 in)
 110 mm (4.3 in)
 530 mm (20.9 in)

S1 = 286 mm / S2 = 298 mm
 S1 = 19 mm
 S2 = 24 mm
 417 mm

1,0 kg (2.2 lb)