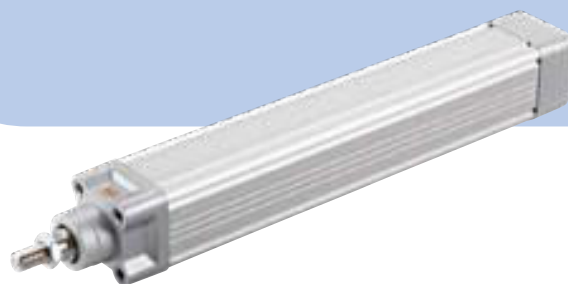


CASM-40

Linear units

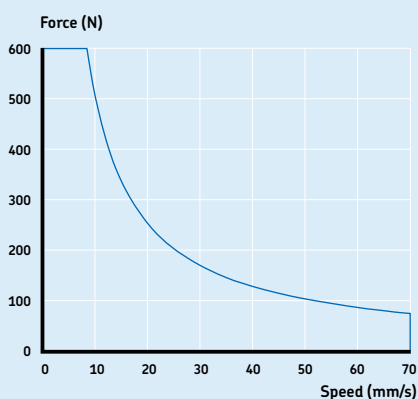


Technical data

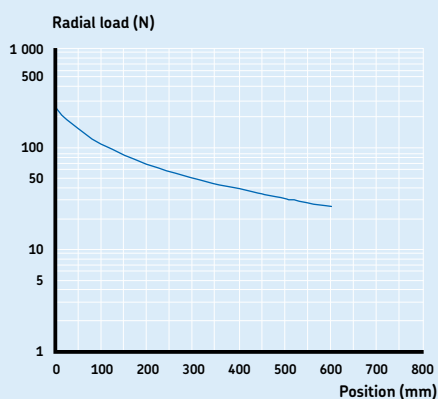
	Unit	CASM-40-LS	CASM-40-BS	CASM-40-BN
Screw type	–	Lead screw	Ball screw	Ball screw
Screw diameter	mm	12,5	12	12,7
Screw pitch	mm	2,5	5	12,7
Max. dynamic force	N	600	2 375	1 550
Max. static force	N	1 500	2 375	2 375
Max. speed	mm/s	70	300	825
Stroke	mm	100 to 600	100 to 600	100 to 600
Max. input torque*	Nm	1,2	2,9	4
Max. input RPM*	1/min	1 680	3 600	3 900
Max. acceleration	m/s ²	1	6	6
Duty cycle	%	60	100	100
Lifetime L ₁₀	km	100	see chart	see chart
Repeatability (same direction and load)	mm	± 0,07	± 0,01	± 0,01
Operating temperature	°C	0 to +50	0 to +50	0 to +50
Humidity	%	95	95	95
Type of protection	IP	54S	54S	54S

* Speed and torque of the motor needs to be limited

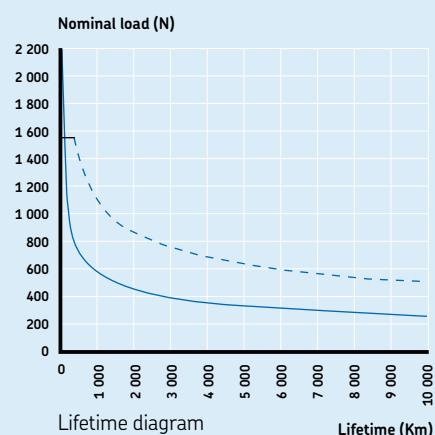
Performance diagrams CASM-40



Speed – force diagram CASM-40-LS
No limitation for ball screw types (max. load at max. speed).



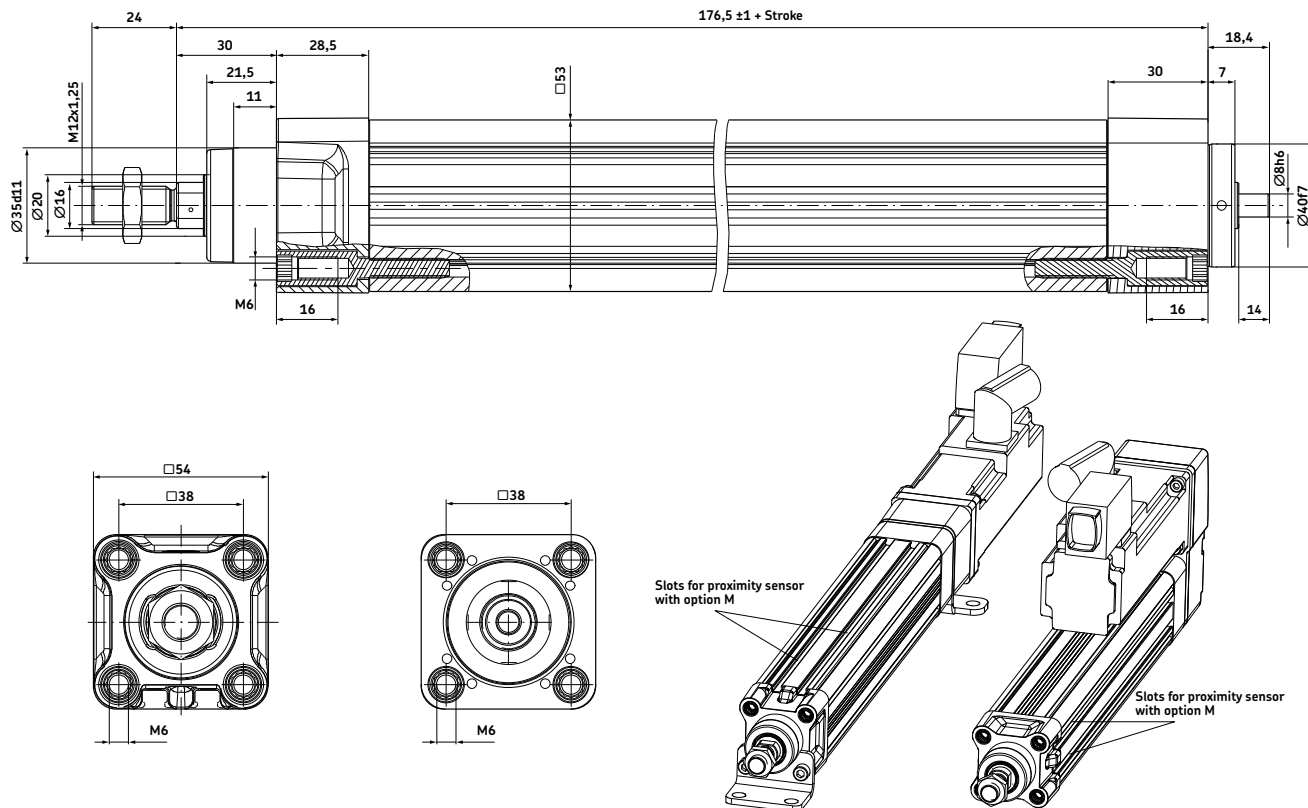
Radial load diagram
The radial load acts perpendicular to the moving direction.



Lifetime diagram
 - - - CASM-40-BN
 — CASM-40-BS



Dimensional drawing



Ordering key

C A S M - 4 0 - - 0 A - 0 0 0

Type

Screw:

Lead screw 12,5×2,5 mm
 Ball screw 12×5 mm
 Ball screw 12,7×12,7 mm

LS
 BS
 BN

Stroke:

100 mm
 200 mm
 300 mm
 400 mm
 500 mm
 600 mm

100
 200
 300
 400
 500
 600

Option¹⁾:

Motor, adapter and accessories separately delivered
 Motor, adapter and foot mountings²⁾ pre-mounted (see orientation of slots on above drawing)

A
 M

1) Motor, adapter kit and accessories need to be ordered separately
 2) Foot mountings pre-mounted on in-line version only

